



Santa &
Snowman
stockings
by Alan Dart

SIRDAR

FUNKY FUR/SNOWFLAKE
CHUNKY/DK

SANTA & SNOWMAN STOCKINGS

Height	40 16	cm in
Width	20 8	cm in
Quality	Shade	Balls
For Santa		
095	Funky Fur	512 2 50gm
097	Snowflake Chunky	300 1 50gm
120	Sirdar Bonus	977 2
	Toytime	980 1
	DK	963 1 25gm
Small amounts in Sunflower 978 and Black 965 of Sirdar Bonus Toytime DK.		
For Snowman		
097	Snowflake Chunky	300 1 50gm
120	Sirdar Bonus Toytime	965 2
	DK	977 1 25gm
Small amounts Apple 980, Orange 981, Sunflower 978 and Bottle 973.		
MATERIALS		
1 Pair of 3¾mm (UK9 - USA5) PONY Knitting Needles.		
5gm of washable toy stuffing.		
Stitch holder.		
Graph paper.		
Soft red pencil.		
For Snowman:		
Long tweezers.		
Hair spray (optional).		
TENSION		
24 sts and 32 rows to 10cm, (4in), measured over stocking stitch worked with Funky Fur or Toytime DK on 3¾mm needles and. 18 sts and 26 rows to 10cm (4in) , using Snowflake Chunky or the size required to give correct tension.		
IT IS ESSENTIAL TO WORK TO THE STATED TENSION TO ENSURE SUCCESS.		

ABBREVIATIONS
beg beginning
cont continue
dec decrease (by working 2 stitches together)
inc increase (by working into front and back of stitch)
K knit
P purl
psso pass slipped stitch over
rem remain(ing)
sl slip
ss stocking stitch (1 row knit, 1 row purl)
st(s) stitch(es)
SKPO slip one, knit one, pass slipped stitch over.
tog together

NOTE
Begin all pieces worked in stocking stitch with a K row, unless otherwise stated, and treat purl side of all sections worked in Snowflake as right side.

TO MAKE NAME CHART
Copying letters from alphabet chart, assemble and draw name on to graph paper, placing each letter block directly next to the previous one to obtain the correct spacing. Now count the number of stitches in your chosen name and subtract this number from 90. Divide the resulting number in half to find the number of edge stitches you will need to work at either side to centre the name on the border. If the figure will

not divide into two equal whole numbers, work the larger number of stitches at beginning of name.

SANTA STOCKING (make 1 piece)
With Apple Toytime cast on 90 sts for base edge of border and ss 2 rows.
*Work name: Use 1 ball of Apple for background shade and 1 ball of Sunflower for letters, stranding yarn shade not in use loosely across wrong side of work.
To prevent a line of holes forming at each end of name, twist yarns over each other one knitted stitch away from first and last letter on every row.

1st name row: K edge sts in Apple, then K first row of name with Apple and Sunflower, reading name chart from right to left, K rem edge sts in Apple.
2nd name row: P edge sts in Apple, then P second row of name with Apple and Sunflower, reading chart from left to right, P rem edge sts in Apple.
Cont in this manner until all 10 rows of name chart have been worked.
Cont in Apple and ss 2 rows.
P 2 rows for fold line.
Ss 12 rows, beg with a K row.**
Change to Signal Red Toytime for hat and ss 49 rows, beg with a P row.
Change to Snowflake for hat cuff and K 1 row.
Dec row: K6, (K 2 tog, K5) to end. [78 sts].
Ss 18 rows, beg with a P row.
Inc row: Change to Funky Fur for beard and (K5, inc 1) to last 6 sts, K6. [90 sts].
Ss 5 rows, beg with a P row.
Work right side: K44, inc 1, turn and work on these 46 sts only, and sl rem 45 sts on to a stitch holder.
P 1 row.
Inc 1 st at end of next row.
P 1 row.
Repeat the last 2 rows three more times. [50 sts].
Inc 1 st at end of next row.
Inc 1 st at beg of next row.
Repeat the last 2 rows four more times [60 sts].
Inc 1 st at end of next row.
P 1 row.
Repeat the last 2 rows two more times. [63 sts].
Inc 1 st at end of next row.
Dec 1 st at end of next row.
Repeat the last 2 rows once more. [63 sts].
K 1 row.
Dec 1 st at end of next row.
Repeat the last 2 rows five more times [57 sts].
***Dec 1 st at end of next 8 rows. [49 sts].
Dec 1 st at beg and end of next 6 rows. [37 sts].
Cast off 6 sts at beg of next 2 rows. [25 sts].
Cast off 8 sts at beg of next row. [17 sts].
Cast off for base edge.****
Work left side: Rejoin Funky Fur to held 45 sts, inc 1, K to end. [46 sts].

P 1 row.
Inc 1 st at beg of next row.
P 1 row.
Repeat the last 2 rows three more times. [50 sts].
Inc 1 st at beg of next row.
Inc 1 st at end of next row.

Repeat the last 2 rows four more times. [60 sts].
Inc 1 st at beg of next row.
P 1 row.
Repeat the last 2 rows two more times. [63 sts].
Inc 1 st at beg of next row.
Dec 1 st at beg of next row.
Repeat the last 2 rows once more. [63 sts].
K 1 row.
Dec 1 st at beg of next row.
Repeat the last 2 rows five more times. [57 sts].
K 1 row.
Work as given for right side from *** to ****.

FACE (make 1 piece)
With Flesh Tone Toytime cast on 34 sts for top edge and ss 6 rows.
1st Inc Row: K15, inc 1, K1, inc 1, K16. [36 sts].
P 1 row.
2nd Inc Row: K16, inc 1, K1, inc 1, K17. [38 sts].
P 1 row.
Next Row: SKPO, K15, inc 1, K1, inc 1, K16, K2tog. [38 sts].
P 1 row.
Repeat the last 2 rows seven more times. [38 sts].
Cast off 4 sts at beg of next 2 rows. [30 sts].
Cast off 10 sts at beg of next 2 rows. [10 sts].
Cast off for base edge.

NOSE (make 1 piece)
With Flesh Tone Toytime cast on 4 sts for top edge and ss 2 rows.
Inc 1 st at beg of next 8 rows. [12 sts].

Inc for Base
Next Row: (Inc 1) three times, K5, (inc 1) three times, K1. [18 sts].
Ss 7 rows.
Next row: (K2tog) to end. [9 sts].
Break yarn, leaving a long end. Thread through sts on needle, draw up tightly and fasten off to form base point.

MOUSTACHE (make 2 pieces)
With Funky Fur cast on 9 sts for top edge and ss 2 rows.
Inc Row: Inc into every st to end. [18 sts].
Ss 13 rows.
1st dec row: (K1, K2tog) to end. [12 sts].
Ss 5 rows.
2nd Dec Row: (K2tog) to end. [6 sts].
Ss 3 rows.

Break yarn, leaving a long end. Thread through sts on needle, draw up tightly and fasten off.

EYEBROWS (make 2 pieces)

With Funky Fur cast on 14 sts and ss 3 rows. Cast off.

HANGING LOOP (make 1 piece)

With Apple Toytime cast on 30 sts and K 1 row.

Cast off K wise.

TO MAKE UP

Fold stocking in half and join beard, hat cuff and hat seam, then turn work over to join border seam so seam turning occurs on wrong side of each section. Fold down border along knitted fold line and sew down base edge, using backstitch worked over every stitch along cast on edge. Turn stocking inside out and oversew corresponding stitches on first and last rows of Snowflake hat cuff section together to form a tuck on right side. Turn stocking back to right side and fold up cuff. Matching top edge to base of hat cuff, pin face piece in position at front of stocking and sew in place. Pin nose in position, placing top edge on first increase row in centre of face and gathered base point on last increase row. Stuffing base of nose firmly, sew in place. Join side edges on each moustache piece to make a cone shape, then work a gathering thread through every stitch on top edge, draw up tightly and fasten off. Placing gathered top edge of each piece directly below nose, sew moustache in position, following curved base edge of face. Using a length of Black Toytime, embroider a curved line of 6 chain stitches for each eye, stitching through both layers of knitting, then sew eyebrows in place above eyes, sewing down along cast on edge of each piece so they stand proud. Blush cheeks and base of nose with pencil, working in a circular motion to gradually build up colour. Finally, fold hanging loop in half and sew ends to inside base edge of border at back of stocking.

SNOWMAN

STOCKING (make 1 piece)

With Signal Red Toytime cast on 90 sts for base edge of border and ss 2 rows. Work name and remainder of border as given for Santa from * to **, replacing Apple Toytime with Signal Red. Change to Black Toytime for hat and ss 39 rows, beg with a P row. Change to Apple Toytime for hatband and ss 10 rows.

Work hat brim: Change to Black Toytime and ss 2 rows.

1st Inc Row: (K2, inc 1, K2) to end [108 sts].

Ss 3 rows.

2nd Inc Row: (K2, inc 1, K3) to end [126 sts].

Ss 3 rows.

3rd Inc Row: (K3, inc 1, K3) to end [144 sts].

P 3 rows for folded brim edge.

1st Dec Row: (K3, K2tog, K3) to end [126 sts].

Ss 3 rows.

2nd Dec Row: (K3, K 2 tog, K2) to end [108 sts].

Ss 3 rows.

3rd Dec Row: (K2, K2tog, K2) to end. [90 sts].

P 1 row.

Change to Snowflake for head and K 1 row.

Dec Row: K2, (K2tog, K2) to end. [68 sts].

Ss 3 rows, beg with a P row.

Work left side: K33, inc 1, turn and work on these 35 sts only, and sl rem 34 sts on to a stitch holder.

P 1 row.

Inc 1 st at end of next row.

P 1 row.

Repeat the last 2 rows three more times. [39 sts].

Inc 1 st at end of next row.

Inc 1 st at beg of next row.

Repeat the last 2 rows two more times. [45 sts].

Inc 1 st at end of next row.

P 1 row.

Inc 1 st at end of next row.

Dec 1 st at end of next row.

Repeat the last 4 rows once more.

[47 sts].

Ss 3 rows.

Dec 1 st at end of next row.

Repeat the last 4 rows two more times. [44 sts].

Ss 2 rows.

***Dec 1 st at beg of next 4 rows.

[40 sts].

Dec 1 st at beg and end of next 4 rows.

[32 sts].

Cast off 6 sts at beg of next 3 rows.

[14 sts].

Cast off for base edge.****

Work right side: Rejoin Snowflake to held 34 sts, inc 1, K to end.

[35 sts].

P 1 row.

Inc 1 st at beg of next row.

P 1 row.

Repeat the last 2 rows three more times. [39 sts].

Inc 1 st at beg of next row.

Inc 1 st at end of next row.

Repeat the last 2 rows two more times. [45 sts].

Inc 1 st at beg of next row.

P 1 row.

Inc 1 st at beg of next row.

Dec 1 st at beg of next row.

Repeat the last 4 rows once more.

[47 sts].

Ss 3 rows.

Dec 1 st at beg of next row.

Repeat the last 4 rows two more times. [44 sts].

Ss 3 rows.

Work as given for left side from

*** to ****.

CARROT NOSE (make 1 piece)

With Orange Toytime cast on 26 sts for base edge and ss 6 rows.

1st Dec Row: K2, (K2tog, K2) to end. [20 sts].

Ss 5 rows.

2nd Dec Row: K2, (K2tog, K1) to end. [14 sts].

Ss 5 rows.

3rd Dec Row: K1, (K2tog) six times, K1. [8 sts].

Ss 5 rows.

Break yarn, leaving a long end. Thread through sts on needle, draw up tightly and fasten off.

EYES (make 2 pieces)

With Black Toytime cast on 10 sts and ss 3 rows.

Break yarn, leaving a long end. Thread through sts on needle, draw up tightly and fasten off.

MOUTH (make 1 piece)

With Black Toytime cast on 48 sts.

Cast off.

HOLLY LEAVES (make 4 pieces)

With Bottle Toytime cast on 13 sts for centre edge and ss 1 row.

Dec 1 st at beg and end of next 2 rows. [9 sts].

First point

***Next Row:** P3, turn and work on these sts only.

Dec row: Sl 1, K2tog, PSSO. [1 st].** Break 50cm length of yarn, thread through st on needle and draw up, then sew down side of point to meet rem 6 sts.

Second point: Work as given for first point from * to **, then sew yarn down side of point to meet rem 3 sts.

Third point: Work as given for first point from * to **, then sew yarn down side to meet cast on edge.

HOLLY BERRIES

(make 3 pieces)

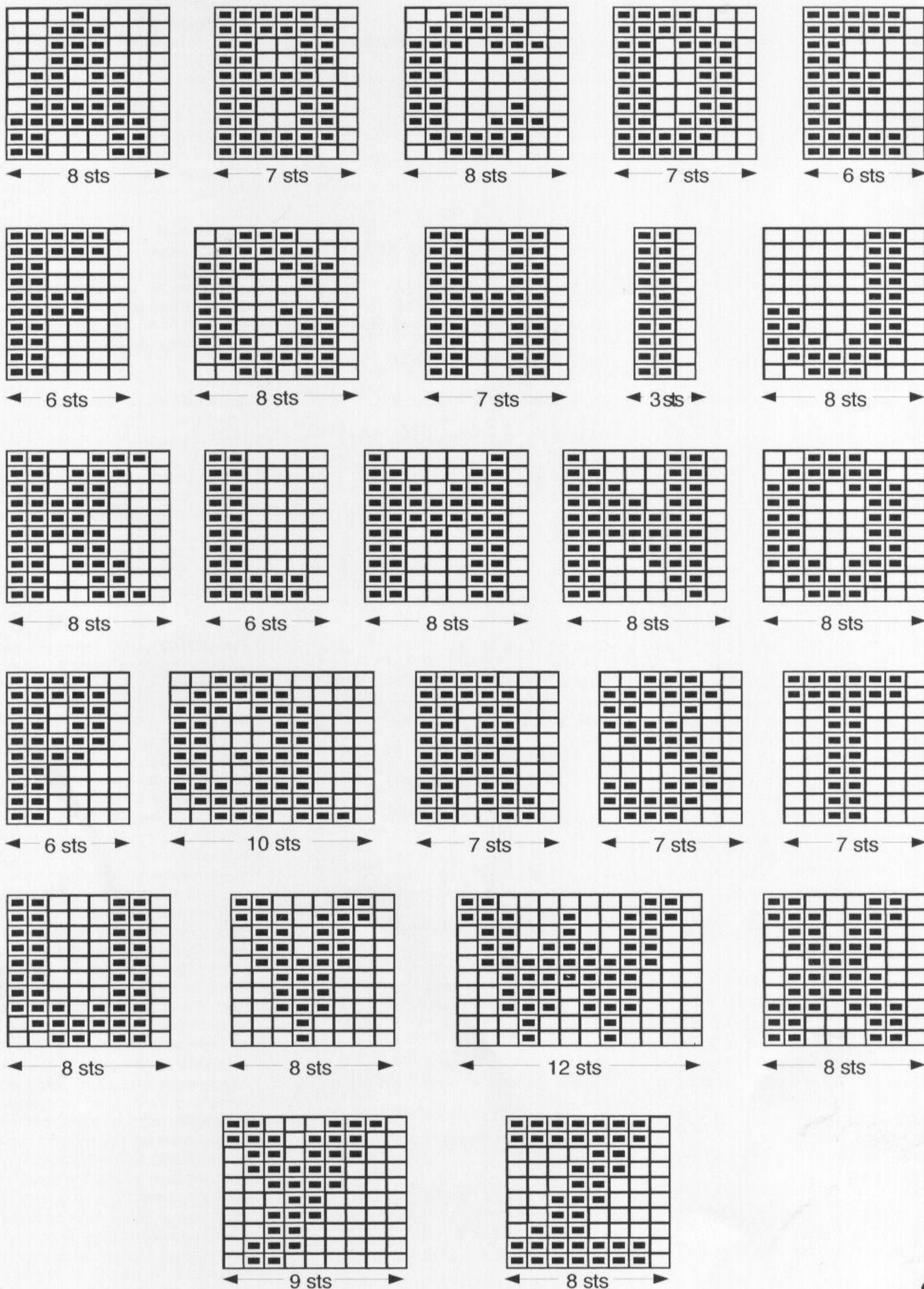
With Signal Red Toytime work as given for eyes.

HANGING LOOP (make 1 piece)

With Signal Red Toytime work as given for Santa.

TO MAKE UP

Fold stocking in half and join head, hat brim and hat seam, then turn work over to join border seam so seam turning occurs on wrong side of each section. Fold down border along knitted fold line and sew down base edge, using backstitch worked over every stitch along cast on edge. Turn stocking inside out and oversew corresponding stitches on first and last Black rows of hat brim section together to form a tuck on right side, then turn stocking back to right side. Join side edges of carrot nose piece to form a cone, then stuff firmly. With seam running along underside, pin nose in position, 2.5cm below hat brim at front of stocking, and sew in place. Join side edges of each eye piece and use tweezers to stuff firmly with a little matching yarn, then work a gathering thread through every stitch on cast on edge, draw up tightly and fasten off. Position and sew eyes securely in place, spacing 5cm apart. Pin mouth piece in position, bending into a curved shape, then sew in place with backstitch worked down centre. Using a length of Snowflake, embroider groups of 4 satin stitches over mouth at regular intervals to separate strip into a line of small 'coals'. Take two holly leaf pieces right sides facing and oversew cast on edges together to form central spine, then repeat with remaining two pieces. You may like to stiffen these leaves with a little hair spray at this point. Make up holly berries in same manner as eyes, then position and sew leaves and berries in place on hatband, directly above left eye. Finally, fold hanging loop in half and sew ends to inside base edge of border at back of stocking.



QUERIES. Please contact:- Knitting Helpline, Sirdar Spinning Ltd, Flanshaw Lane, Wakefield, WF2 9ND, West Yorkshire, England.
Tel: 01924 371501. Fax: 01924 290506. www.sirdar.co.uk. E-mail: Knitting-helpline@sirdar.co.uk



WARNING. Reproduction of this publication is protected by copyright. It is sold on the condition that it is only used for non-commercial purposes.
All other rights reserved by Sirdar Spinning Ltd.

SIRDAR SPINNING LTD CANNOT ACCEPT RESPONSIBILITY FOR THE RESULT OF USING ANY OTHER YARN.

Owing to printing restrictions the colour reproduction is matched as closely as possible to the yarn.

Printed in Great Britain

WPMBAD2128

